



The SCOOP

2024 SUMMER ISSUE | THE M&M EXCAVATING COMPANY NEWSLETTER | VOLUME 05

Here's the Scoop...

Hey M&M Crew!

Welcome to the heat of Orange Barrel Construction Season, which keeps us all busy! Yet even with the obligations of work, I hope the 4th of July extended weekend allowed you to spend time with your family & friends. "Splashing through the Sand Bar. Talking by the Campfire. It's the Simple Things in life, like When & Where. Catching Walleye from the Dock. Watching the Waves roll off the Rocks." Because, as Kid Rock sings, "It's summertime in Northern Michigan."

The M&M Family Picnic on July 13th was a fun-filled day focused on what truly makes M&M work – our families. Check out the memories we captured inside this newsletter! In addition to a delicious BBQ picnic, equipment rides & games for the kids, and a surprise visit from the Ice Cream Truck, we unveiled **The Power of &** - a nod to the unique & creative passions each crewmember brings every day to each jobsite beyond their job responsibilities. Each of us has lives & dreams outside of work. These lives & dreams animate us. They bring us to life. They stir our souls. They give us purpose. Whether it's your children's hobbies or your own, dirt biking, woodworking, horseback riding, cooking, fishing, or anything that brings you joy... M&M is committed to a culture where the "&" of each crewmember is honored & celebrated!

When YOU are at your best... WE are at our best! Keep stretching to become your very best!

Stay Safe & Ensure Quality - Be Proud & Maintain Integrity –
Love Your Family & Promote Your Community

Brandie Meisner
President | CFO



Inside This Issue

PG. 2

Work in Progress

PG. 3

Work in Progress, continued

PG. 4

Ask the Expert and Safety News

PG. 5

New "Crew" Section on Website and Book Giveaway

PG. 6

Inside Scoop: The Power of &

PG. 7

Special Events: Annual M&M Family Picnic Highlights

PG. 8

Special Event: Practical Day

PG. 9

The Scoop for Kids?

*Please read & share with your families.
Send your story ideas & photos to
[newsletter@m-mexcavating.com!](mailto:newsletter@m-mexcavating.com)*

Work In Progress



This 2024 Construction Season has been a busy but exciting one! Here are some of the highlights:



I-75 in Cheboygan County:
MDOT Project with CA Hull,
80% complete.



I-75 BL Roundabout in Gaylord:
MDOT Project, Roundabout
Construction, 65% complete.



US-127 in Lenawee County:
MDOT project with Michigan Paving,
85% complete.



US-127 in Gratiot County:
MDOT Project with Michigan Paving,
65% complete.



**Otsego County Airport (GLR) in
Gaylord: Perimeter Road & Grading
with Pyramid Paving, Complete.**



Alpena Airport (APN) in Alpena:
Phase II Runway Rehabilitation,
90% complete.



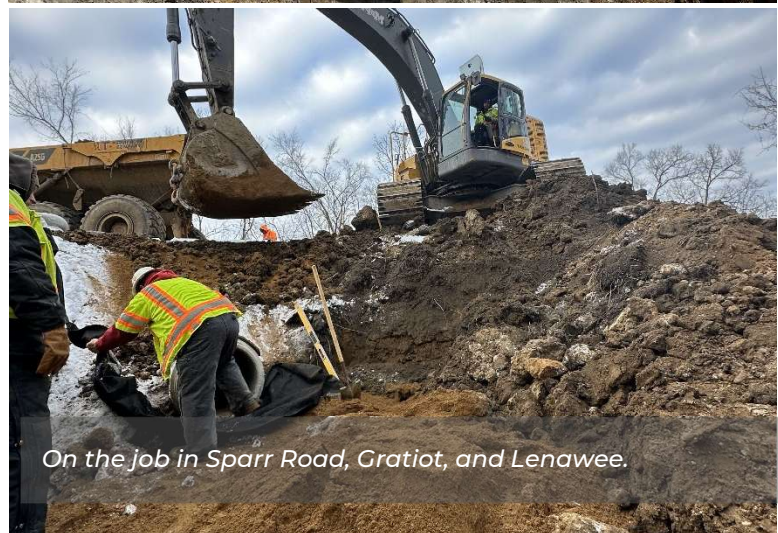
Newberry DNR Office:
DTMB Project with Walbridge,
90% complete.



Gaylord Rest Area in Otsego County:
MDOT Rest Area Reconstruction,
Complete.



M-46 #96 Drain in Gratiot County:
Started July 2024, 80% complete.



On the job in Sparr Road, Gratiot, and Lenawee.

Work In Progress



Veterans Drive in Traverse City:
Started July 2024, 10% complete.



Camp Grayling Training Center:
Beginning August 2024.



Curtis Road in Saginaw:
Beginning September 2024.



West Branch Community Airport:
Beginning August 2024.



7 Mile Road in Bay County:
Beginning August 2024.



Bagley Township Hall in Otsego County:
Beginning August 2024.



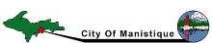
Further Down the Road:



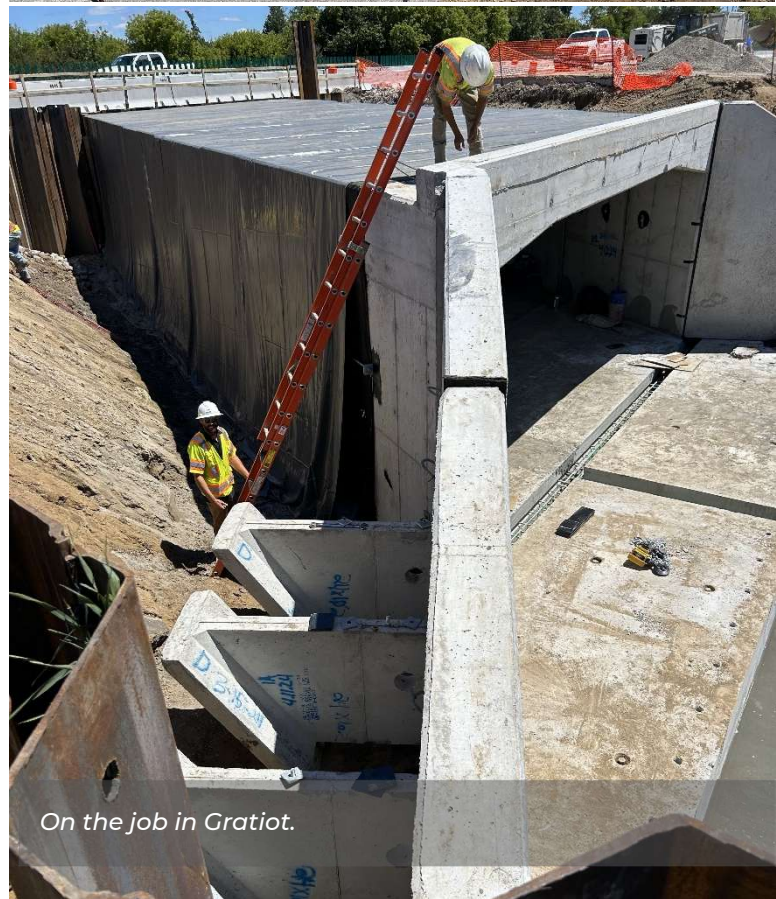
Dobson Drain in Arenac County:
Beginning Spring 2025.



Manistee County Blacker Airport:
Beginning Spring 2025.



Manistique CSO Phase 2:
Beginning Spring 2025.



On the job in Gratiot.



Employees who use cut-off saws must be trained to operate the saw safely. Review the Owner's Manual for each model saw that is used. This Toolbox Safety Talk can help review important safety tips.

Work Practices

Review the **Owner's Manual** for each model cut-off saw you use.

Inspect each saw before use:

- Blade not cracked, chipped, or warped.
- Use the correct blade for material and conditions being cut.
- Match saw RPM with blade RPM.
- Machine guards (belt and blade guards) are secure and adjusted.
- Verify throttle and stop switch are working.
- Fuel added when saw is cold.

Prevent Kick-back:

- Always keep two hands on the saw. Never operate with one hand.
- Never cut above shoulder height.
- Do not bend over the blade when cutting.
- Support the material being cut to prevent pinching or binding of the wheel.
- Do not grind or bevel on the side of the wheel.
- Release pressure on the cut-off saw as you reach the end of the cut.
- Review owner's manual to understand directional forces on the wheel.
- Position your body to keep clear of the wheel and reactive forces.

Work Safely:

- Start saw when resting on ground. Do not "drop start" cut-off saws.
- Wet cut when feasible to reduce dust and reduce energy of reactive forces on the wheel.
- During transport, do not roll the blade wheel on the ground.
- This can damage the wheel and cause shattering during use.

Personal Protective Equipment

Safety Glasses with Side Shields



Work Gloves



Hearing Protection – ear plugs or ear muffs



Boots



Matt will be creating a lot of great safety content like this to help keep us all safe on the job.



New "Ask the Expert" Series Talks with Luke Gordon



Our new "Ask the Expert" series will cover a different topic in each article to help you learn more about our operations and give you a better understanding of how things work inside M&M.



In our first article, we took a closer look at **M&M's Project Management** department, led by **Luke Gordon, our VP of Project Management.**

Luke has a strong background at Ajax

Paving and a lot of experience in the industry. He brings valuable knowledge and leadership to our growing Project Management Department.

When M&M gets a new project, it moves from our Estimating department to Luke's capable hands. From the first handoff meeting to getting permits, making schedules, and working with vendors and subcontractors, Luke has the whole team work together collaboratively.

"Good communication is the foundation of successful project management... Every employee...represents M&M's values and culture, so clear and constant communication is essential."

The team makes sure projects stay on track and change as needed. In everything, communication is key—not just for keeping the Crew on the same page but also for managing client expectations and making sure all parts of the project run smoothly. Be sure to check out the article!

Is there a topic that you would like to learn more about? Let us know and we can cover it in a future article.

Safety News



In line with our commitment to ensuring the safety of every employee, and with our company growth, M&M recently hired our first **Safety Coordinator, Matthew Southwick.**

Matt will keep us up-to-date with the changing regulations, as well as work with management to improve the safety culture in the company. He recently met with Greg from MITA and Patrick from the CET division of MIOSHA. These meetings will help mitigate citations and help with safety companywide.

Be sure to make Matt feel welcome and say, "Hi!" when you see him.

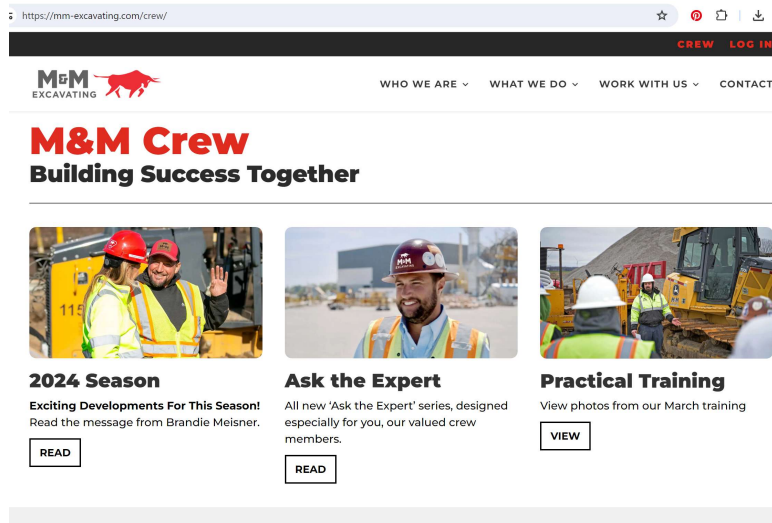


New "M&M Crew" Section On M&M's Website



We are excited to announce a new section on our website called "M&M Crew." This section has been specially designed for—you guessed it—Our Crew! Find helpful resources such as the season's current projects, the latest in our "Ask the Expert" series, our webstore, and so much more!

Be sure to check it out by scanning the QR code or by clicking the word "CREW" on the top right of our main page.



More Than a Book, The Beginning of a Movement



Some ideas are so powerful that simply becoming aware of them changes our lives forever. Holy Moments is such an idea.

Once you hear the undeniable truth that "Some moments are holy, some moments are unholy, and you get to decide," the idea is impossible to forget. You cannot unhear it. It creates an immediate paradigm shift. Everywhere you go you see opportunities to participate in Holy Moments...



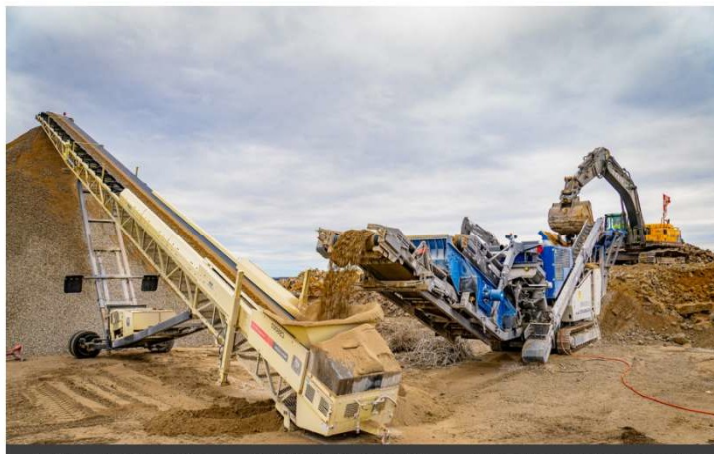
Request your FREE COPY of this life-changing book! Simply send your name and address to jen@m-mexcavating.com or scan the QR code.

Concrete CRUSHER



- » Asphalt Recycling
- » Concrete Crushing
- » Mobile - we bring the crusher to you

If you have interest in these services, email bids@m-mexcavating.com or call 989.370.4849 (John) or 989.370.4846 (Ken).



Safety & Quality • Pride & Integrity • Family & Community

Inside Scoop: The Power of &

Let me tell you about the '&' in M&M.

Ever wonder what it means? Well, it's more than just a symbol.

You're not just an employee here. You're part of something bigger. You bring your own special touch to work every day. And we know...it's not just about the job. It's about the life you build.

Way back in '73, brothers Matt & Mark Nowicki started this whole thing. Since then, we've thrived by connecting our crew, our customers, and the good people of Michigan.

Our '&'? It stands for what we believe in: **Safety & Quality... Pride & Integrity... Family & Community.** Now, this "Power of &" - it's what links our past to our future. For Michigan, it means highways & roads... utilities & airports...treatment plants and underwater lines. It's how we're building a better tomorrow.



Your '&'?

That's what you bring to the table.

It takes grit, hard work, and a whole lot of passion to be part of this crew.

We celebrate your '&'

- your skills, your interests, your life outside of work.

We know the sacrifices you make during the construction season. Long days...time away from family. It doesn't go unnoticed.

So, what's your '&'?

We want to hear your story.

It's what makes M&M tick.

Thank you for your dedication. Your '&' is shaping our future.

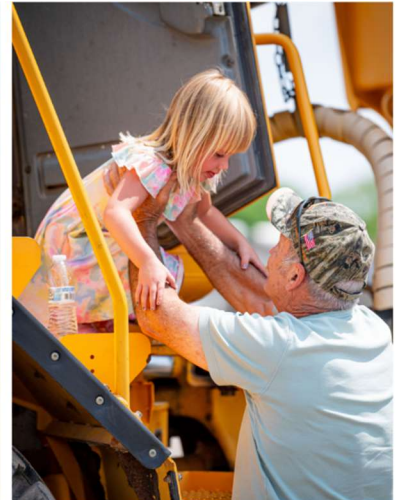
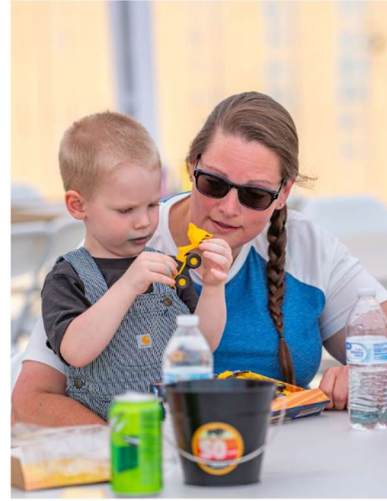
Let's keep building it together. Remember, at M&M, you're not just part of a company...you're part of a legacy.

Tell us about YOUR Power of '&' and upload your photos and videos here:



Special Events: What We've Done and What's Up Next

July 13, 2024: Thank you to everyone who joined us for our Annual M&M Family Day Picnic. We were blessed with beautiful weather and many wonderful memories.



Special Events: What We've Done and What's Up Next



March 2024: As part of M&M University, our Crew participated in Practical Training with many opportunities for mentorship and hands-on learning in the field.

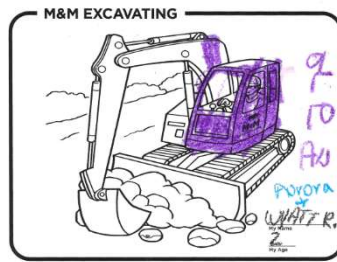
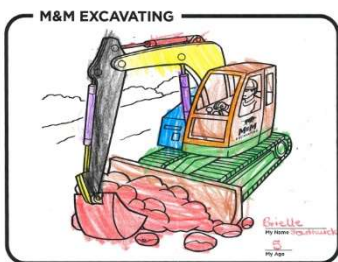
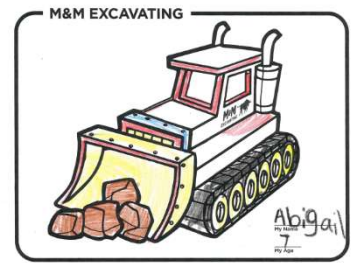
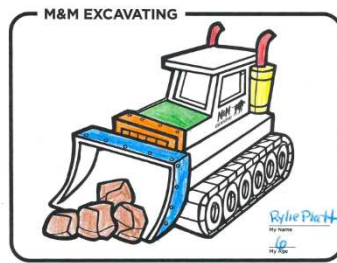
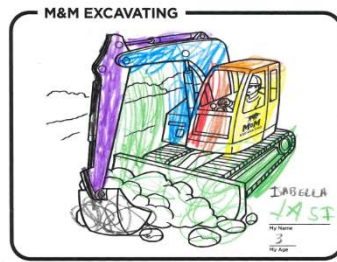
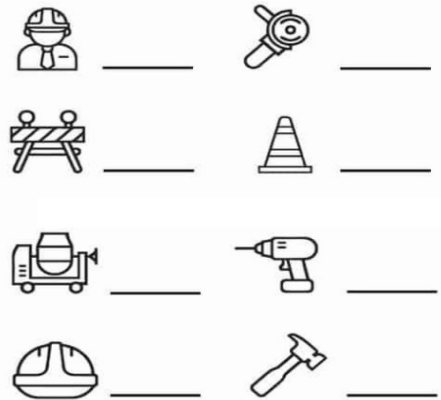
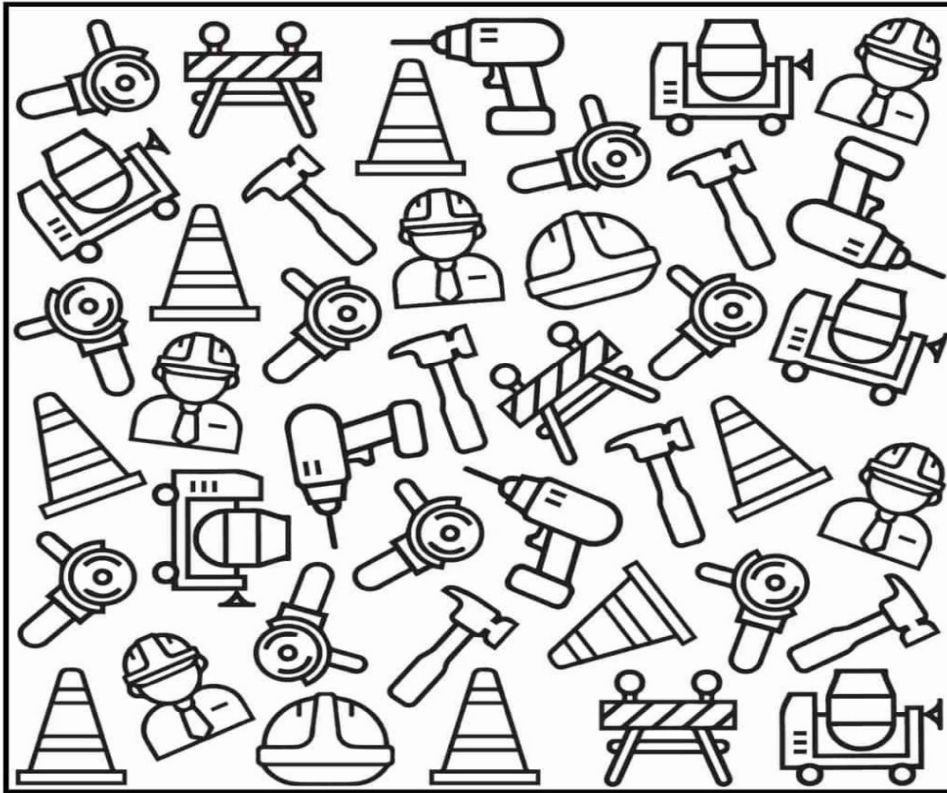


Hey, Kids! Show us how you SCOOP!

I SPY CONSTRUCTION



After your child completes the activity, bring it in or send in a photo to newsletter@m-mexcavating.com to receive a coupon for a tasty treat!



Thank you to all the kiddos who entered our "Christmas Card Coloring Contest." Keep an eye out this Christmas for the winning entry!

